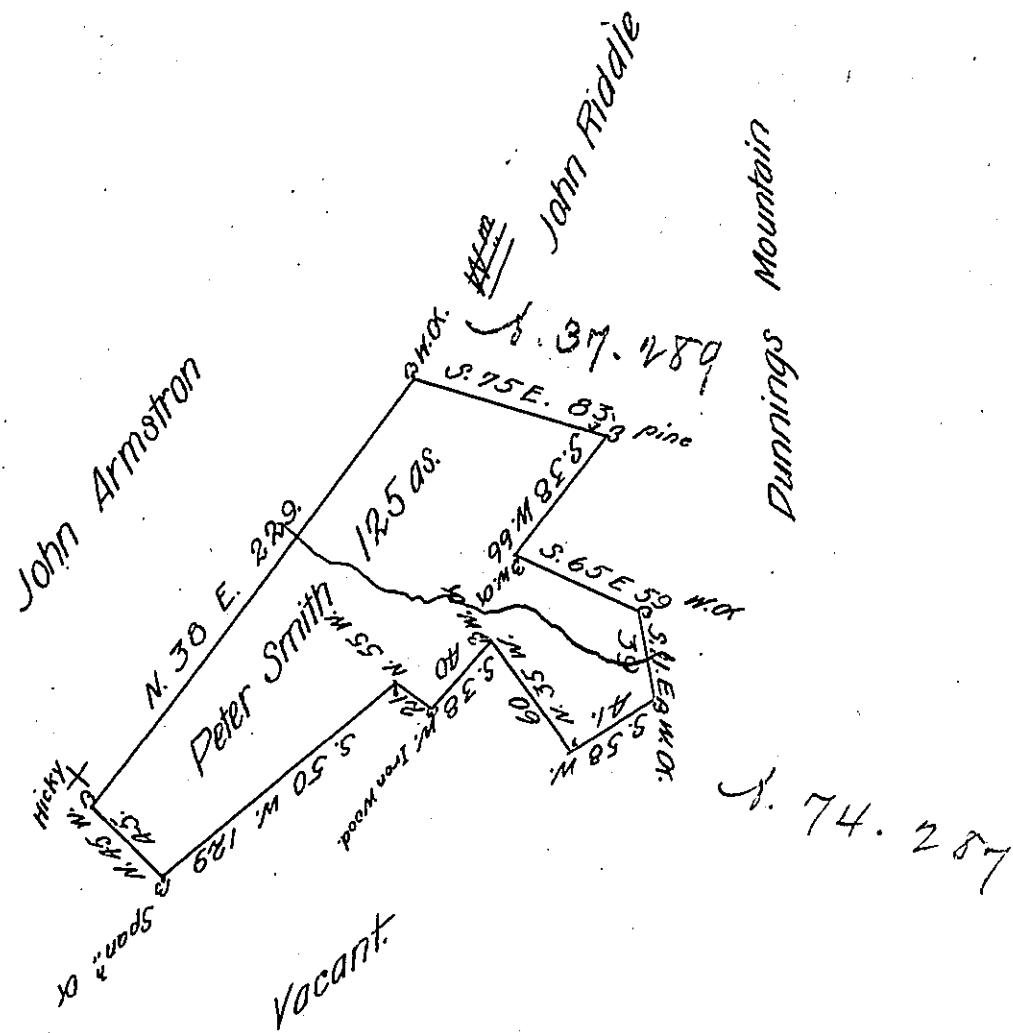


FORM NO. 1.



A Draught of a Tract of Land Situate on the Waters of Dunning's Creek
 in Bedford County Containing One hundred & Twenty five acres & the Usual
 Allowance of Six P. Cent for Roads &c. Surveyed 30th Novemb^r 1785 in
 pursuance of a Warrant Dated the 13th Sep^r 1785

George Woods D.S.

John Lukens Esq. S.G.

IN TESTIMONY that the above is a copy of the original remaining on file in
 the Department of Internal Affairs of Pennsylvania, made
 conformably to an Act of Assembly approved the 16th day of
 February, 1833, I have hereunto set my Hand and caused
 the Seal of said Department to be affixed at Harrisburg,
 this fifteenth day of November 1906

Laurel Brown
 Secretary of Internal Affairs.